

CTF | CONNECTED
TECHNICAL
FURNITURE

 **CONCEPT SEATING**®



PREMIUM CONTROL ROOM CHAIRS

www.ctfconsoles.com

3152HR OPERATOR

This unique 24/7 intensive use chair combines the utility of a task chair with the feel of a high back. Lean against the headrest or neck roll, or slide the headrest out of the way and lock the chair forward for support while doing desk work. With its wide seat base, the 3152HR is sturdy, spacious and comfortable.



— KEY — POINTS

ERGO AIR SUSPENSION SYSTEM™

Our Ergo Air Suspension (EAS²) dissipates the occupant's weight over the entire chair surface improving blood flow and increasing oxygen levels to tissues. Improved blood flow and increased oxygen levels improves concentration and productivity and decreases fatigue. EAS² conforms to the shape of each occupant, as it almost instantly bounces back to original shape when weight is lifted. No springs eliminates the chances of squeaky or flattened springs.

REPLACEABLE COVERS - Covers can wear, but our frames are virtually indestructible. Bring back that 'brand new' look in minutes even after years of 24/7 service. Covers can be held on by hook-and-loop and can be replaced in a matter of minutes. Back rest requires a screw driver.

SAFETY CASTERS - Smooth dual wheel design with spring action not to roll away unless there is weight in the chair. Dual connection point eliminates rattle for a smooth roll.

ALL STEEL FRAME - Ten gauge steel maintains original tensile strength and rigidity over years of 24/7 heavy duty use.

ADJUSTABLE ARMRESTS - No tools required to adjust. You can choose style, width and height for customized comfort, security, and support. Swing arm style will swing out of the way from a seated position.

WARRANTY - The best warranty you'll never need. Chair is covered by a 6 year warranty that includes product failure. Steel frame is warranted for a period of 10 years. Weight limit is 550 lbs. in a multi-shift environment.

3152HR OPERATOR

SEAT PAN DEPTH	18" (ADJUSTABLE TO 21")
SEAT PAN WIDTH	23"
BACK HEIGHT - TO TOP OF CHAIR BACK	21"-24"
BACK HEIGHT - TO TOP OF HEADREST	27"-31.5"
ARM HEIGHT ADJUSTMENT RANGE	7 POSITIONS (3.5") OR INFINITE ADJUSTMENT
ARM WIDTH ADJUSTMENT RANGE	2.5" (22"-27")
PNEUMATIC CYLINDER SPECIFICATION	CERTIFIED TO 100,000 CYCLES 500 NEWTONS - DIN CLASS 4551-4
SEAT HEIGHT RANGE ADJUSTMENT	18.5"-22.75" (DEPENDING ON CYLINDER)
ARTICULATING HEADREST	USE AS A NECK ROLL, HEADREST, OR FOLD OUT OF THE WAY
TILT CONTROL W/ TENSION ADJUSTMENT AND UPRIGHT POSITION LOCK	YES
UPRIGHT POSITION LOCK	YES
BASE SIZE DIAMETER AND CONFIGURATION	28" AND 7 LEG (TESTED TO 10,000 LB. DYNAMIC LOAD)
LUMBAR SUPPORT ADJUSTMENT	ADJUSTABLE AIR CELL THAT SUPPORTS LOWER BACK
ARMREST CHOICES	C-LOOP OR OPTIONAL SWING ARMS
FRAME CONSTRUCTION	10 GAUGE STEEL
SEAT BOTTOM ASSEMBLY	ERGO AIR SUSPENSION (EAS ²)™
CASTERS	SAFETY CASTER, DUAL CONNECTION POINT 165 LB./CASTER - OPTIONAL 75mm, GLIDES OR ESD CASTERS
COVER MATERIALS	STACCATO OR OPTIONAL LEATHER AND ALTERNATIVE LEATHER
REPLACEABLE COVERS	YES, WITHOUT TOOLS
TEST STANDARDS	30% HIGHER: GSA FNEW83-269A and ANSI/BIFMA X5.11 STANDARD TEST: ANSI/BIFMA and FIRA 055:2005
WARRANTY	6 YEAR 24/7 INTENSIVE USE WARRANTY - 10 YEAR ON FRAME

FABRIC OPTIONS:

**Note: Material colors on this card are approximations only. For an accurate color samples, please request a color ring at hello@ctfconsoles.com.

LEATHER



BLACK
70



MIDNIGHT BLUE
36*



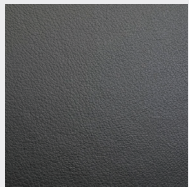
BURGUNDY
73*



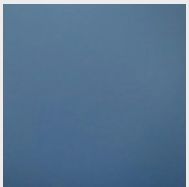
FIREBRICK RED
67*

*SPECIAL ORDER COLOR.

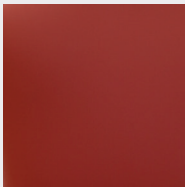
ALTERNATIVE LEATHER



BLACK
07

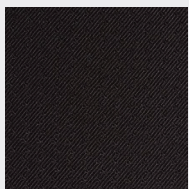


AIR FORCE BLUE
01

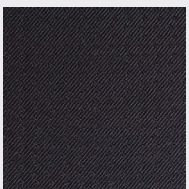


POPPY RED
02

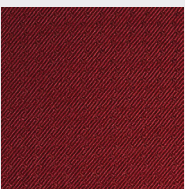
FABRIC



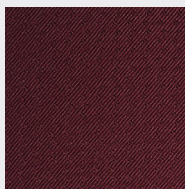
STACCATO BLACK
57



STACCATO NAVY
82



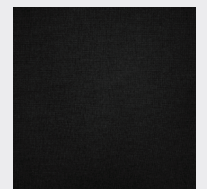
STACCATO RED
55



STACCATO BURGUNDY
59



STACCATO SLATE
56



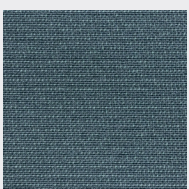
CORDURA BLACK
92**

**COLOR NOT INCLUDED IN NORMAL PRICING, IF INTERESTED ASK REP FOR QUOTE.

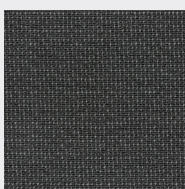
ESD



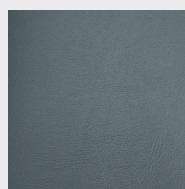
ANTHRACITE/
MIDNIGHT
95



COBALT/BLUE
96



GRAPHITE/
CHARCOAL
97



BLACK VINYL
98




CONNECTED TECHNICAL FURNITURE

CTF Metal Steel Workshop LLC

Warehouse B3, Dubai Investment Park-1, Dubai, United Arab Emirates

 www.ctfconsoles.com

 [CTF Consoles](#)

 hello@ctfconsoles.com