



PREMIUM CONTROL ROOM CHAIRS

www.ctfconsoles.com

3120

SPLIT HIGH BACK

The 3120 provides maximum flexibility with a split high back. It also supports up to 550 lb., comes with a 6 year warranty, a soft touch lumbar adjustment, and a 2:1 recline ratio. This isn't too good to be true; it is the new 3120 from Concept Seating.



Patent Pending

— KEY — POINTS

ERGO AIR SUSPENSION SYSTEM™ - Our Ergo Air Suspension (EAS²)™ dissipates the occupant's weight over the entire chair surface improving blood flow and increasing oxygen levels to tissues. Improved blood flow and increased oxygen levels improves concentration and productivity and decreases fatigue. EAS² conforms to the shape of each occupant, as it almost instantly bounces back to original shape when weight is lifted. No springs eliminates the chances of squeaky or flattened springs.

SPLIT HIGH BACK - The back of the chair is adjustable independently of the seat. This allows for maximum flexibility to ergonomically accommodate the widest range of body types in a multi-shift environment.

SAFETY CASTERS - Smooth, dual wheel design with a spring action that won't roll away unless there is weight in the chair. Dual connection points eliminate rattle for a smooth roll.

ALL STEEL FRAME - Ten gauge steel maintains original tensile strength and rigidity over years of 24/7 heavy duty use.

ADJUSTABLE ARMRESTS - No tools are required to adjust. You can choose style, width and height for customized comfort, security, and support. Optional Pivot Arms will pivot out of the way either forward or backward.

SOFT TOUCH LUMBAR - Increase the amount of lumbar support with the soft touch pump conveniently located on the back of the chair for a streamlined look.

WARRANTY - The best warranty you'll never need. The chair is covered by a 6 year warranty that includes product failure. The steel frame is warrantied for 10 years with a weight limit of 550 lb. in a multi-shift environment.

3120 SPLIT HIGH BACK

SEAT PAN DEPTH	18" (ADJUSTABLE TO 21")
SEAT PAN WIDTH	21"
BACK HEIGHT - TOP OF SEAT TO TOP OF SEAT BACK	25" - 27"
SHOULDER WIDTH	22"
ARM HEIGHT ADJUSTMENT RANGE	7 POSITIONS (3.5") OR INFINITE ADJUSTMENT
ARM WIDTH ADJUSTMENT RANGE	2.5" (22" - 27")
PNEUMATIC CYLINDER SPECIFICATION	CERTIFIED TO 100,000 CYCLES 500 NEWTONS - DIN CLASS 4551-4
SEAT HEIGHT RANGE ADJUSTMENT	16" - 21.5"
ARTICULATING HEADREST	USE AS A NECK ROLL, HEADREST, OR FOLD OUT OF THE WAY
TILT CONTROL W/ TENSION ADJUSTMENT AND UPRIGHT POSITION LOCK	YES
UPRIGHT POSITION LOCK	YES
BASE SIZE DIAMETER AND CONFIGURATION	28" AND 7 LEG (TESTED TO 10,000 LB. DYNAMIC LOAD)
LUMBAR SUPPORT ADJUSTMENT	SOFT TOUCH LUMBAR
ARMREST CHOICES	C-LOOP OR PIVOT ARMS
FRAME CONSTRUCTION	10 GAUGE STEEL
SEAT BOTTOM ASSEMBLY	ERGO AIR SUSPENSION (EAS ²)™
CASTERS	SAFETY CASTER, DUAL CONNECTION POINT 165 LB./CASTER - OPTIONAL 75 mm, GLIDES OR ESD CASTERS
COVER MATERIALS	ALTERNATIVE LEATHER
REPLACEABLE COVERS	YES
TEST STANDARDS	GSA FNEW83-269A, ANSI/BIFMA, FIRA 055:2005
WARRANTY	6 YEAR 24/7 INTENSIVE USE WARRANTY - 10 YEAR ON FRAME
EMBROIDERY	CUSTOM EMBROIDERY AVAILABLE

FABRIC OPTIONS:

**Note: Material colors on this card are approximations only. For an accurate color samples, please request a color ring at hello@ctfconsoles.com.

LEATHER



BLACK
70



MIDNIGHT BLUE
36*



BURGUNDY
73*



FIREBRICK RED
67*

*SPECIAL ORDER COLOR.

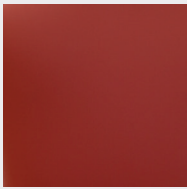
ALTERNATIVE LEATHER



BLACK
07

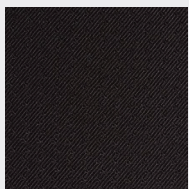


AIR FORCE BLUE
01

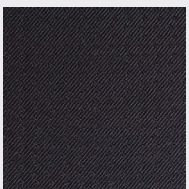


POPPY RED
02

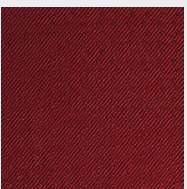
FABRIC



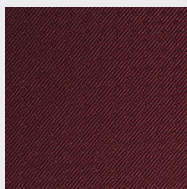
STACCATO BLACK
57



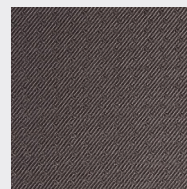
STACCATO NAVY
82



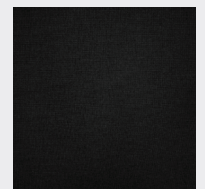
STACCATO RED
55



STACCATO BURGUNDY
59



STACCATO SLATE
56



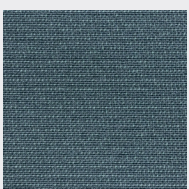
CORDURA BLACK
92**

**COLOR NOT INCLUDED IN NORMAL PRICING, IF INTERESTED ASK REP FOR QUOTE.

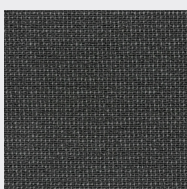
ESD



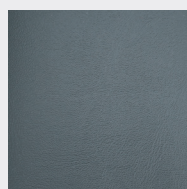
ANTHRACITE/
MIDNIGHT
95



COBALT/BLUE
96



GRAPHITE/
CHARCOAL
97



BLACK VINYL
98



CONNECTED TECHNICAL FURNITURE

CTF Metal Steel Workshop LLC

Warehouse B3, Dubai Investment Park-1, Dubai, United Arab Emirates



www.ctfconsoles.com



CTF Consoles



hello@ctfconsoles.com